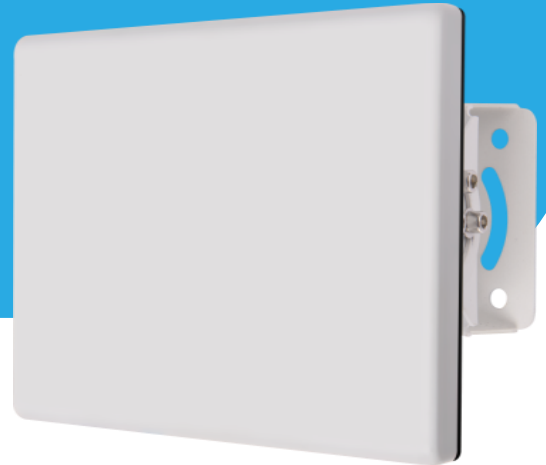
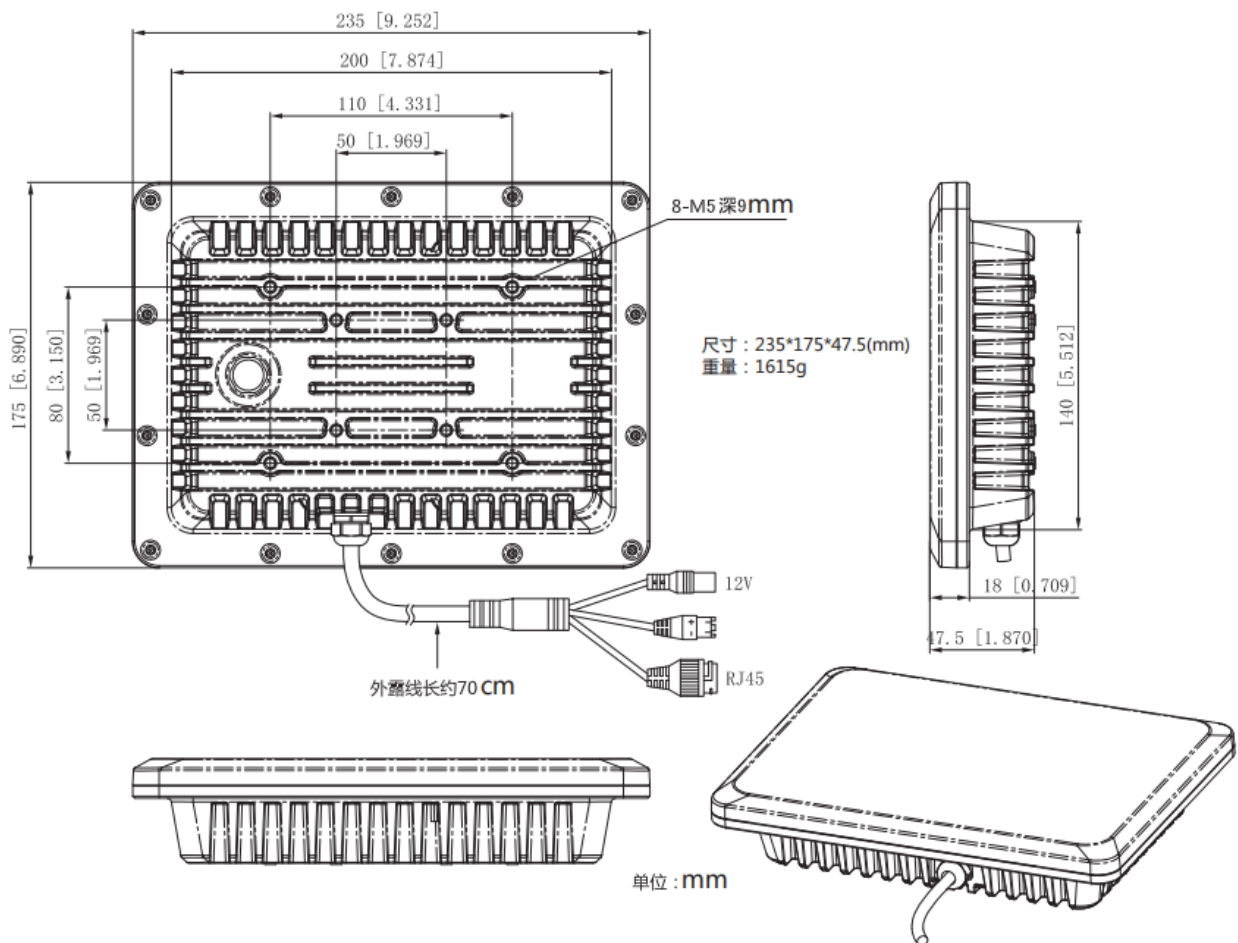


MS-7SMWR03A

Wide Area Detection Radar



Dimensions (mm)



Specification

Radar Characteristics	
Radar Sensor	FMCW Radar
Radar Output Data	Distance, direction, angle
Transmit Frequency	24.00 ~ 24.1 GHz
Refresh Rate	8 Hz
EIRP	39 dBm
Power Consumption	17 W
Detection Performance	
Target Identification	People, Vehicles
Recognition Pattern	Radar triggers an alarm, linkage video review
Detection Range (Pedestrian)	1.5 ~ 450 m
Detection Range (vehicle)	1 ~ 600 m
Detection Accuracy	±0.75 m
Detection Resolution	1.5 m @human, 6 m @ship
Speed Range	0.5 m/s ~ 30 m/s
Speed Accuracy	0.006 m/s
Speed Resolution	0.003 m/s
Angle Accuracy	±1°
FOV	Azimuth: 90°, Elevation: 13°
Hardware Characteristics	
Communication Protocol	UDP, TCP
Network Interface	1 RJ45 10M/100M (PoE)
RS485	Support
Physical Characteristics	
Power Supply	12 VDC / PoE (IEEE802.3af)
Working Temperature	-40 ~ 75°C
Storage Temperature	-40 ~ 85°C
Weight	1.0 kg
Dimension	235 × 175 × 47.5 mm
Protection Class	IP66