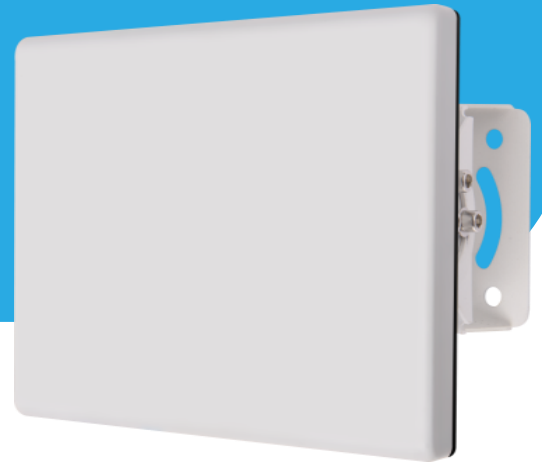
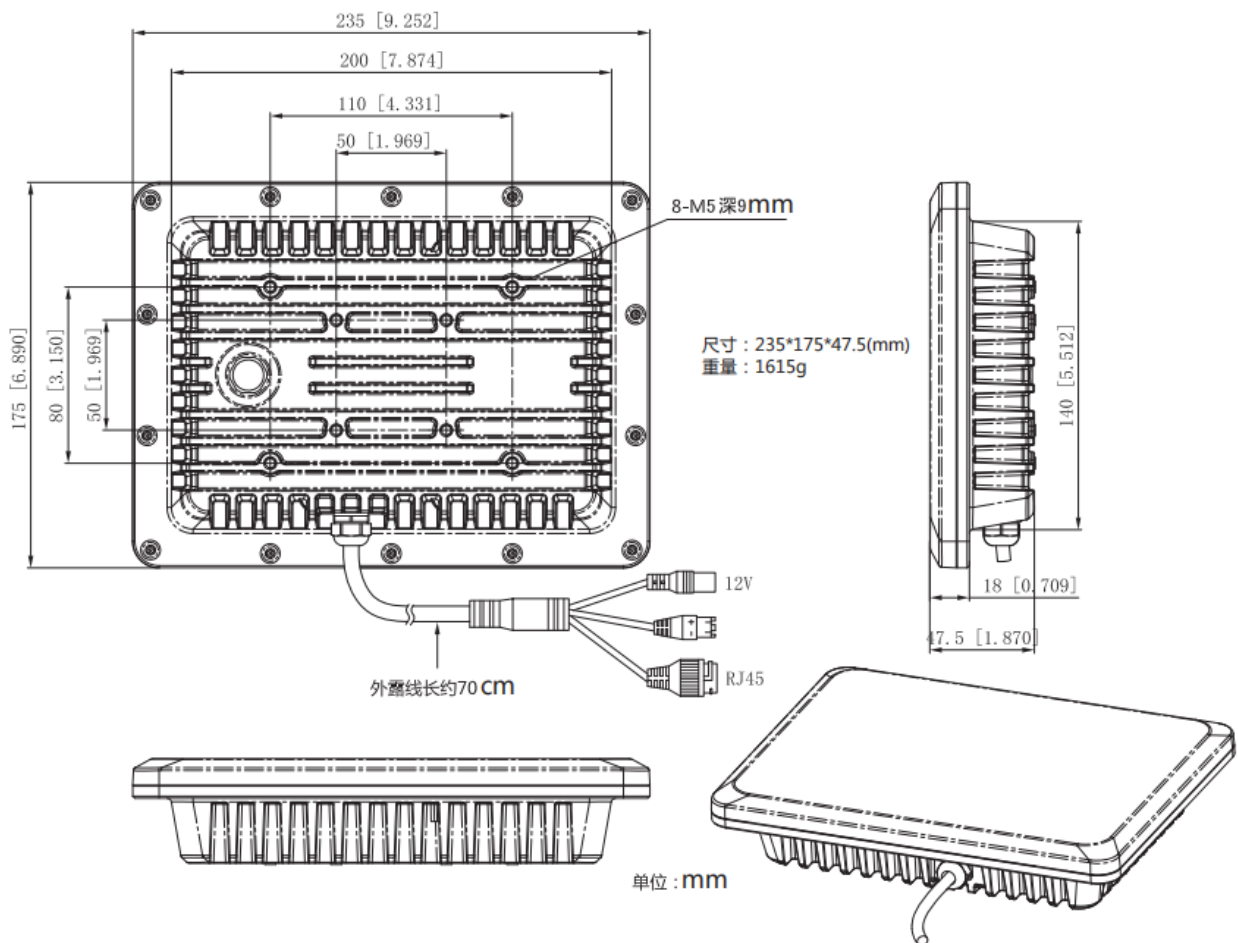


MS-7SMWR03W

Wide Area Detection Radar



Dimensions (mm)



Specification

Radar Characteristics	
Radar Sensor	FMCW Radar
Radar Output Data	Distance, direction, angle
Transmit Frequency	24.00 ~ 24.25 GHz
Refresh Rate	8 Hz
EIRP	20 dBm
Power Consumption	17 W
Detection Performance	
Target Identification	Ships
Recognition Pattern	Radar triggers an alarm, linkage video confirmation
Detection Range (Ship)	Small boat: 1.5 ~ 800 m (4.92 ~ 2624.67 ft), big boat : 1.5 ~ 1500m (4.92 ~ 4921.26 ft)
Detection Accuracy	±3 m (9.84 ft)
Detection Resolution	6 m (19.69 ft)
Speed Range	-30 m/s ~ 30 m/s
Coverage	Max: 150000 m ² (1614586.56 sq.ft), Min: 20 m ² (215.28 sq.ft)
Detection Rate	99 % (RCS 1 m 2 people , minimum detection speed 0.5 m / s)
Detection Tare	0.003 m/s
Angle Accuracy	±1°
FOV	Azimuth: 90°; Elevation: 13°
Hardware Characteristics	
Communication Protocol	UDP, TCP
Network Interface	1 RJ45, 10/100/1000M adaptive
RS485	Support
Physical Characteristics	
Power Supply	12VDC/PoE+
Working Temperature	-40 ~ 65°C
Storage Temperature	-60 ~ 85°C
Protection Class	IP66
Weight	1.6 kg
Dimension	235 × 175 × 47.5 mm
Protection Class	IP66
Installation Height	Radar 2 ~ 3 m (6.56 ~ 9.84 ft)